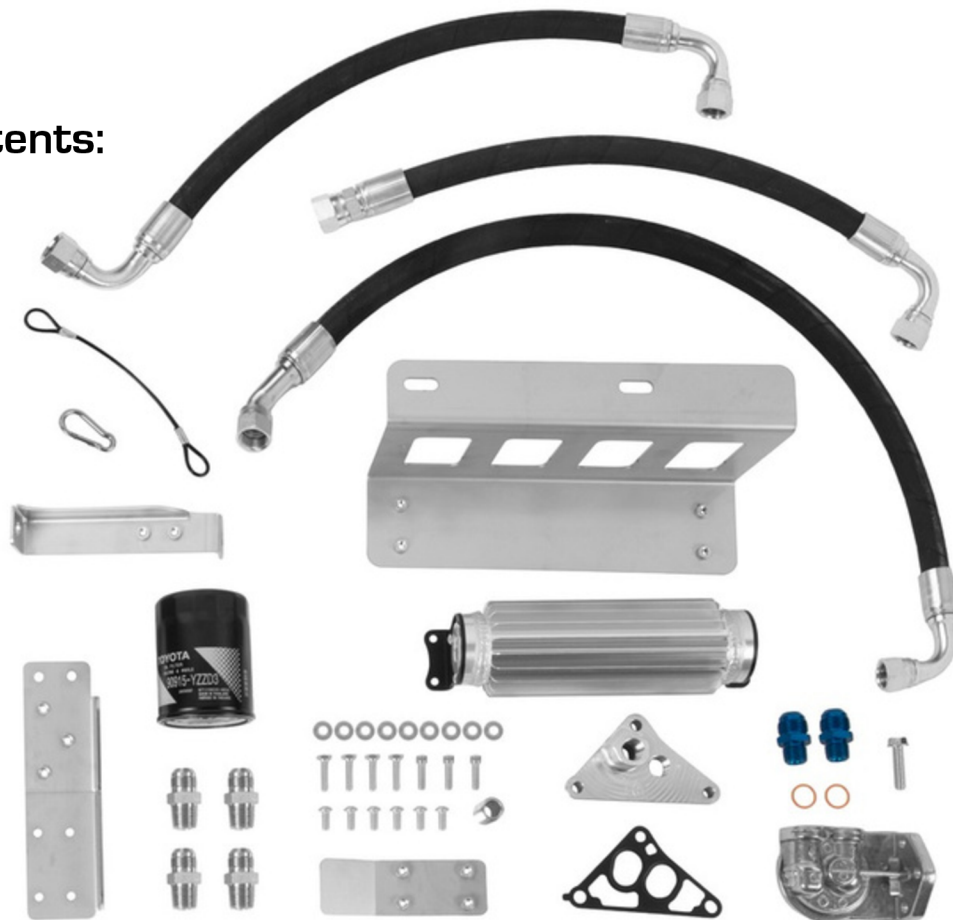




Oil Filter Relocation Kit for 3rd Gen Tacoma 3.5L V6 Engines (2016-2023)

TGI-313319 (Complete Kit) | TGI-313320 (Adapter Plate & -10 Fittings Only)

Kit Contents:



TGI-313334-INS

INSTALLATION INSTRUCTIONS



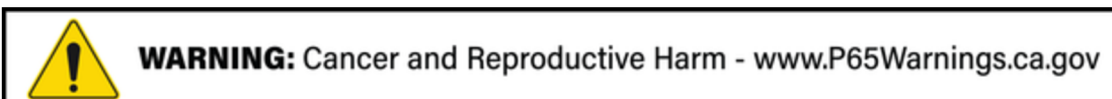
Recommended Tools:

- Safety Glasses
- Metric Ratchet & Socket Set
- Box End Wrench Set
- Hex Key Set
- Drill & Drill Bit Set
- Engine Oil

(Use the oil recommended in your Owner's Manual)

CAUTION

1. Read all instructions completely and carefully before you begin. If anything is not clear, please call our tech support line at 1.877.4X4.TOYS or 559.252.4950 or e-mail tech@trail-gear.com before proceeding.
2. Check to make sure the kit is complete and that no parts are missing (refer to the Kit Contents Section on the first page of these instructions). If anything is missing, please contact Trail-Gear at 1.877.4X4.TOYS or 559.252.4950 or e-mail tech@trail-gear.com.
3. Park vehicle on a clean, dry, flat, level surface and block the tires so the vehicle cannot roll in either direction.
4. This product is for off-road use only. It is recommended that the installation steps below be performed by a competent mechanic. Buyers and users of this product hereby expressly assume all risks associated with the installation and use of this product.
5. This installation is typical for most Toyota Tacoma vehicles. Some vehicles may vary. If necessary, refer to the proper Factory Service Manual for the year and model of your vehicle.



INSTALLATION INSTRUCTIONS



STEP 1

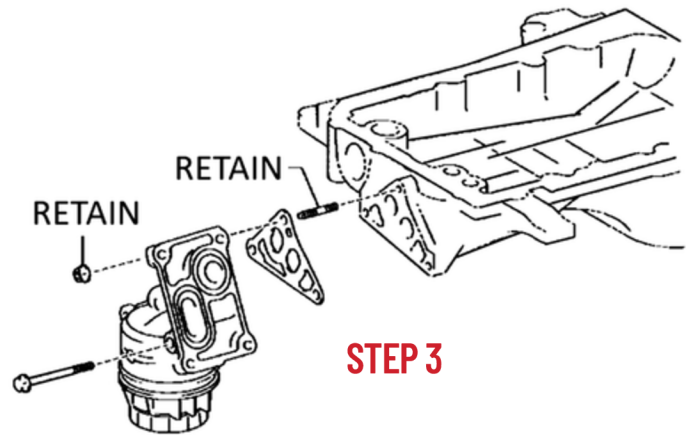
Allow engine to cool before starting.

STEP 2

Drain the engine oil. Discard engine oil in accordance with all applicable laws.

STEP 3

Unbolt & remove the cartridge oil filter assembly. Discard the long bolt, gasket, & oil filter assembly. Retain the two studs, nuts, & oil pressure sensor for reinstallation.

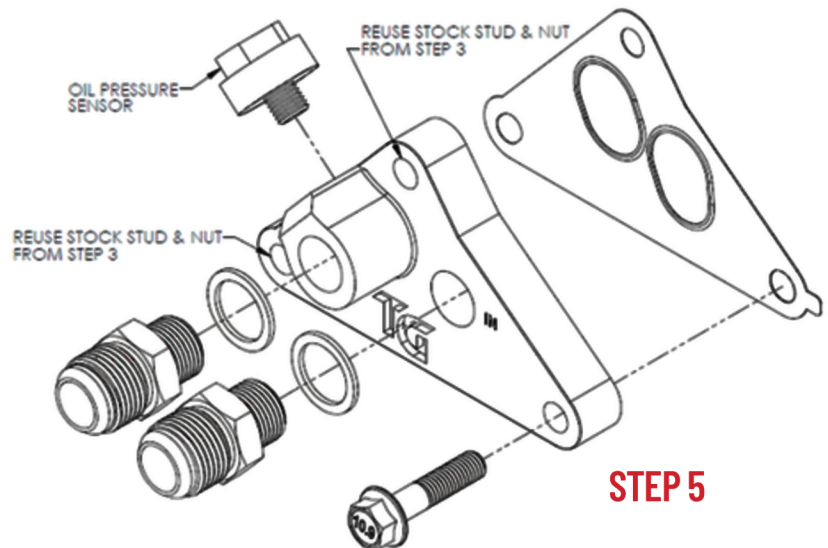


STEP 4

Clean the gasket sealing area on the engine block thoroughly.

STEP 5

Install the (2) -10 fittings and copper crush washers to the triangular-shaped adapter plate, then install the triangular-shaped aluminum adapter plate & gasket to the engine block using the supplied M8 bolt and the stud & nuts removed in Step 3.



STEP 6

If you are installing the complete kit with remote filter, proceed to Step 7. If you are installing the kit with just the adapter plate & fittings, follow these guidelines to finish your installation.

- Install the remote filter mount in a location where it will not be damaged by rocks or other obstacles while wheeling.
- Thread sealant may be carefully applied to fitting threads if needed as an additional barrier against leaks.
- Do not use hoses with push-on (barbed) fittings. To prevent a catastrophic leak, we recommend using hoses with crimped-on fittings. Most local hydraulic supply shops can make custom hoses with crimped fittings. We recommend asking for -10 SAE 100R6 hose with #10 JIC swivel fittings.
- Make sure hoses are routed away from hot engine components and radiator fan blades.
- Use an adequately sized oil filter. Toyota 90915-YZZD3 is the minimum recommended filter size, but a larger Wix 51085 or Mobil1 M1-204 can be used for additional filtration.

INSTALLATION INSTRUCTIONS

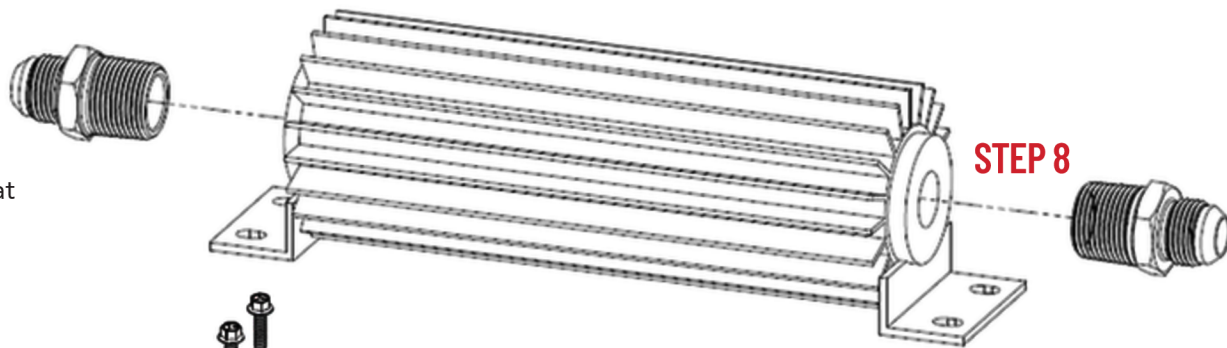


STEP 7

Install the pressure sensor into the triangular adapter plate. Apply a light coat of thread sealant to the threads, and use care to not foul the sensor.

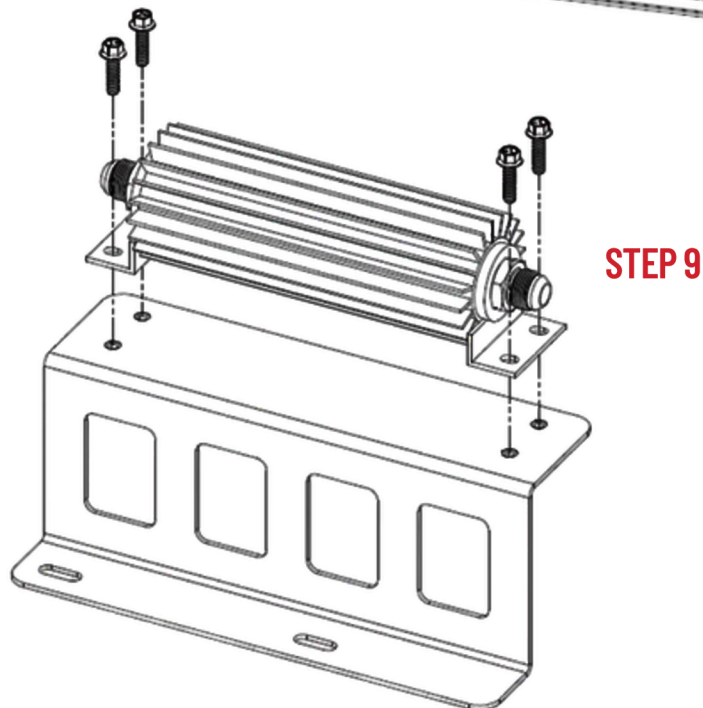
STEP 8

Install the #10 JIC to NPT fittings onto the cooler. Use a light coat of thread sealant to prevent any leaks.



STEP 9

Install the cooler onto the cooler mount using the (4) screws provided.



STEP 10

Unbolt the sheet metal supports on the bumper rail and install the cooler bracket onto the bumper rail. Reinstall the supports with the stock bolts to secure the bracket in place.

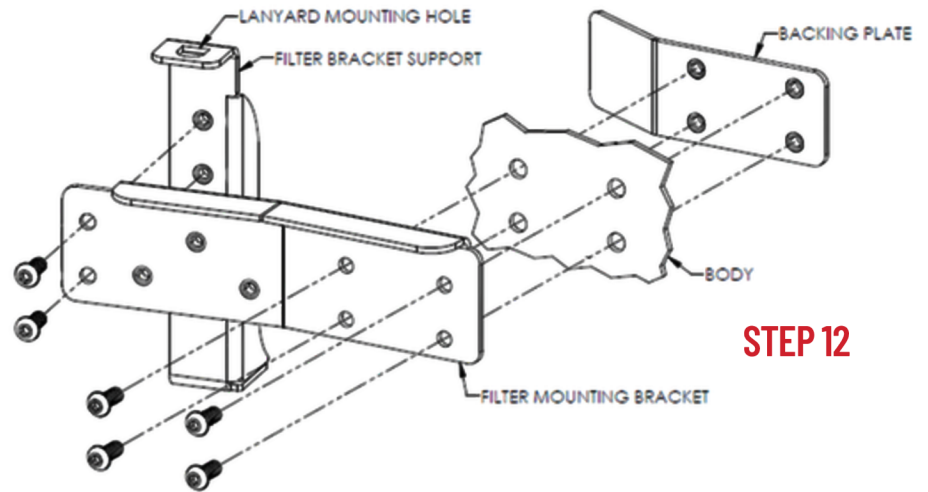


INSTALLATION INSTRUCTIONS



STEP 11

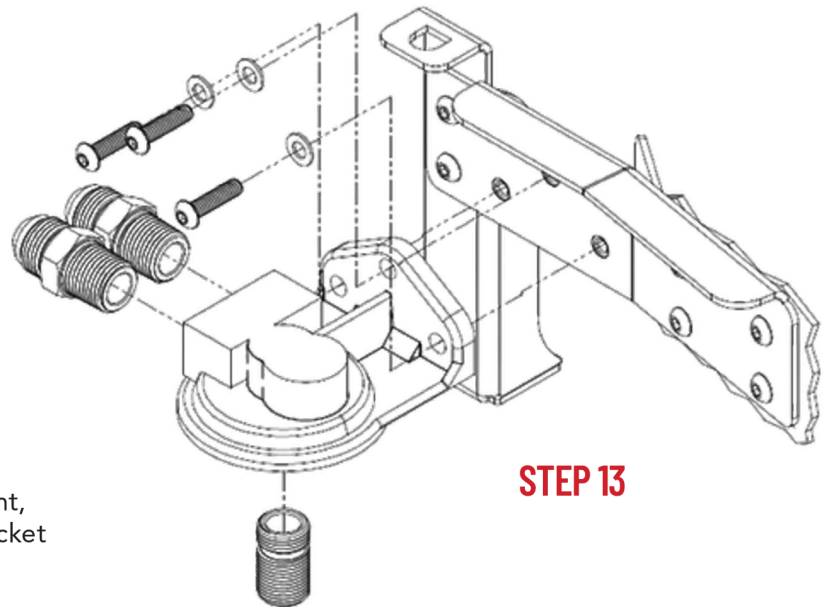
Using the filter mounting bracket as template, mark (4) holes in the body sheet metal. Carefully drill (4) clearance holes with a $17/64$ " drill bit.



STEP 12

STEP 12

Install the filter mounting bracket, backing plate, and support bracket with the supplied screws as shown.



STEP 13

STEP 13

Install the bung & -10/NPT fittings into the filter mount, then install the filter mount to the filter mounting bracket with the supplied screws. Apply thread sealant to the NPT threads to prevent any leaks.

STEP 14

Install the filter onto the filter bracket. When complete, the assembly should look similar to this.



INSTALLATION INSTRUCTIONS



STEP 15

Connect the supplied oil lines to the filter bracket, oil cooler, and the adapter bracket. Tighten the hose fittings securely. Make sure that the hoses are routed away from hot engine components and radiator fan blades.

STEP 16

Wrap the lanyard around the filter mount and secure the lanyard to the filter bracket using the carbiner supplied with the kit.

STEP 17

Wait 4 hours for the thread sealant to cure. Fill the engine with oil and start the engine. Let the oil circulate for a few minutes.

STEP 18

Stop the engine, check the oil level, and fill with oil as needed. It should take approximately 1 quart more than an engine with a stock filter.

STEP 19

Restart the engine and check for oil leaks. Tighten fittings as needed.

STEP 20

Take the vehicle for a test drive and check again for oil leaks. Tighten fittings as needed.