

INSTALL INSTRUCTIONS



1984-1988 TOYOTA 4RUNNER REAR ABS PANEL KIT

TGI-311839 - 1984-1988 TOYOTA 4RUNNER ABS REAR PANEL'S KIT

TGI-311840 - 1984-1988 TOYOTA 4RUNNER ABS REAR PANEL'S W/ 6-1/2" SPEAKER BRACKETS KIT

TGI-311841 - 1984-1988 TOYOTA 4RUNNER ABS REAR PANEL'S W/ 6X9" SPEAKER BRACKETS KIT



TGI-311844

RECOMMENDED TOOLS

Dead blow mallet

5/32 hex drive or 5/32 Allen key

3/16 hex drive or 3/16 Allen key

Phillips screwdriver

22mm wrench

Trim removal tools

Rivet popper (Recommended)

CAUTION

1. Read all instructions completely and carefully before you begin. If anything is not clear, please call our tech support line at 1.877.4X4.TOYS or 559.252.4950 or email tech@trail-gear.com before proceeding.
2. Check to make sure the kit is complete and that no parts are missing (refer to the Kit Contents Section on the first page of these instructions). If anything is missing, please contact Trail-Gear at 1.877.4X4.TOYS or 559.252.4950.
3. Park vehicle on a clean, dry, flat, level surface and block the tires so the vehicle cannot roll in either direction.
4. This product is for off-road use only. It is recommended that the installation steps below be performed by a competent mechanic. Buyers and users of this product



INSTALL INSTRUCTIONS (CONT'D.)



STEP 1

Remove the trim along the rear cab. These screws can be taken out with a Phillips screwdriver.



STEP 2

Collapse both rear seats by lifting the seats up and unlatching the backrests and folding them down.

STEP 3

If present, detach the storage panels located at the rearmost section of the rearpanel. If you are starting on the driver's side, remove the light as well. This will be reinstalled later.



INSTALL INSTRUCTIONS (CONT'D.)



STEP 4

Start by removing the rear interior panels. Detach push-in rivets. Carefully remove all push-in rivets securing the rear panel. Note: Exercise caution during removal to prevent breakage, especially if you plan on keeping the panels.



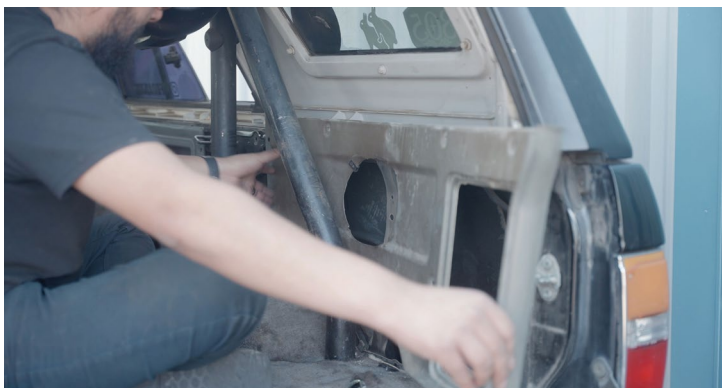
STEP 5

There are two push-in-rivets connecting the rear and the mid panel. Be sure to remove these before removing the rear panel.



STEP 6

Remove the rear panel. Note: If you have the OEM roll cage, you can maneuver the panel out by pulling the panel away from the seat latch and towards the back of the vehicle.

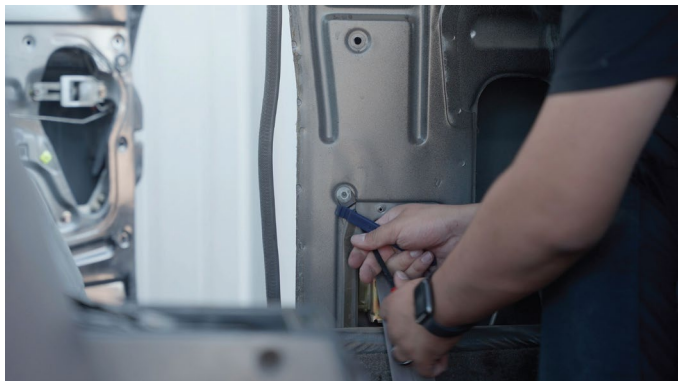


INSTALL INSTRUCTIONS (CONT'D.)



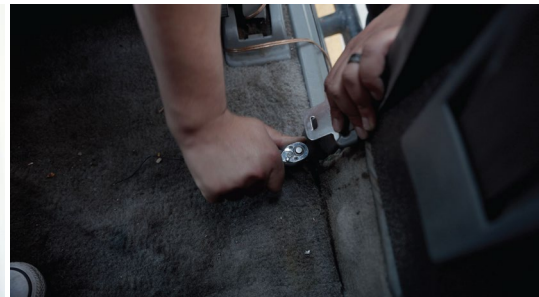
STEP 7

Remove the white clips that were holding the OEM panel in. Note: These clips are very easy to break, if you are planning to keep these. Handle them with care.



STEP 8

To start to remove the middle panel you must first remove the two bolts holding the seat belt in place. Then you must remove the seat belt cover.



STEP 9

Once these are removed use trim poppers to remove the door.



STEP 10

Remove the white clips that were holding the OEM panel in. Note: These clips are very easy to break, if you are planning to keep these. Handle them with care.

STEP 11

Repeat steps 1-10 on the opposite side.

INSTALL INSTRUCTIONS (CONT'D.)



STEP 12

It will help if at this time you lay out all of the new hardware that will be used.



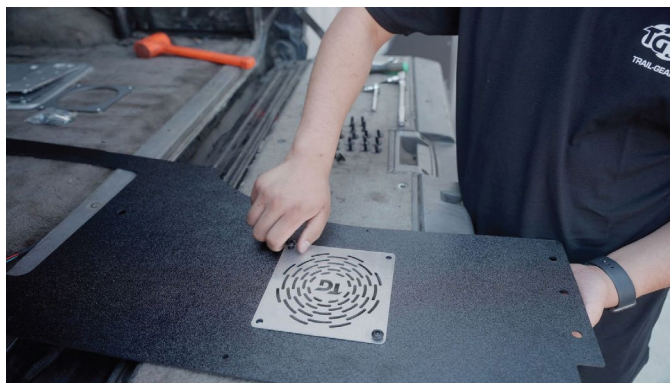
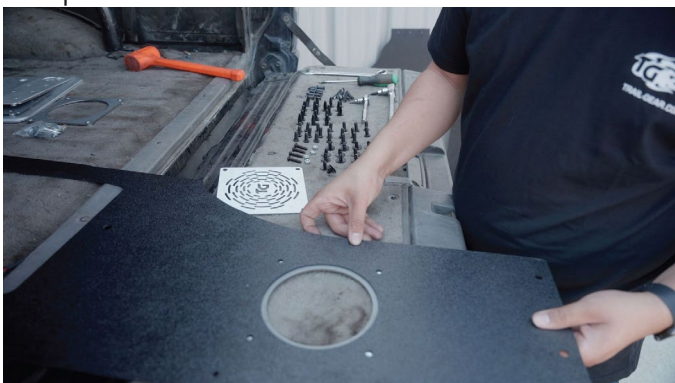
STEP 13

If you bought the speaker bracket set refer to those instructions now.

[CLICK HERE FOR INSTRUCTIONS](#)

STEP 14

Moving on the new panels, first install the speaker grill frame and mount it onto the speaker grill using the provided hardware.



STEP 15

Carefully slide the panel into position

STEP 16

Now place all of the push-in-tree-rivets into the rear panels. Some of these will vary so use a mallet if needed.



INSTALL INSTRUCTIONS (CONT'D.)



STEP 17

If you started on the driver's side reinstall the rear light into the new panels.



STEP 18

Once the rear panel is in place align the center connecting plates. These must be tightened finger tight.



STEP 19

The seat latches now must be reinstalled onto the vehicle. The seat latch should be installed behind the middle plate. Tighten this finger tight.

STEP 20

Place the two screws in the two rear holes of the panels and tighten this finger tight.



STEP 21

Fish the seat belt through the seat belt hole of the new panel.

INSTALL INSTRUCTIONS (CONT'D.)



STEP 22

Now moving to the front of the vehicle, place the new panel in place, shimmy it into the connecting middle plate.



STEP 23

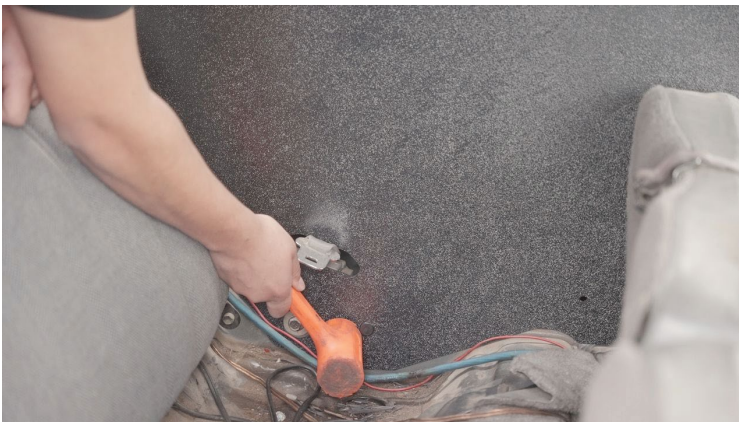
Fish the rear seat belt through the seat belt hole of the new panel.

STEP 24

Place the screws finger tight to the middle panel. All screws should now be finger tight.

STEP 25

Place all push-in-arrow- rivets into the middle panel. Use a rubber mallet if needed.



STEP 26

Fish the front seat belt and cover through the holes of the new panels and screw the cover back on.



INSTALL INSTRUCTIONS (CONT'D.)



STEP 27

There are two special push-in-rivets these will be placed in the spot right above the seat belt cover and the one right next to it.



STEP 28

Reinstall the two screws that was holding the front seat belt in place.



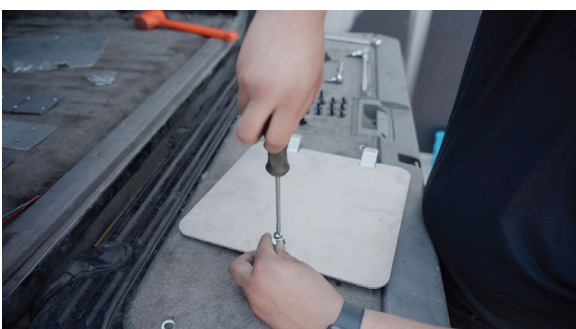
STEP 29

Once all the rivets have been placed, tighten all screws in the middle of the panels.



STEP 30

Moving to the storage panel place the latch in the hole of the panel. Tighten the latch to the storage panel. Once the panel is tightened place the rear latch in the following orientation and tighten it on.



INSTALL INSTRUCTIONS (CONT'D.)



STEP 31

Place the four foam strips on the storage panel with two on the top and two on the left and right sides of it.



STEP 32

Place the storage panels into the proper spot.

STEP 33

Place the top trim back into place.



STEP 34

Repeat for opposite side.

STEP 35

As an additional option there are six self-tapping fasteners that can be installed along the bottom of the rear panels. (Note: if your vehicle has the OEM roll cage just the single screw blocking the path for one of the self-tapping screws.)



THAT COMPLETES THE INSTALLATION OF THIS PRODUCT. FOR MORE INFORMATION GO TO TRAIL-GEAR.COM

