

APPLICATION INSTRUCTIONS

PRODUCT

DAMAGE PREP

1. Remove the puncturing object.
2. Let all the air out of the tire.
3. If necessary, clean in and around the damaged area with mild soapy water.
4. Let dry completely.

ADHESIVE PREP

1. Open the adhesive by cutting off tip of the cap. DO NOT remove cap and insert tip into bottle.
2. Insert a knife or other tool to lift up the exposed edges of the damage.
3. Using the applicator tip, drop adhesive on the edges of the damage.
4. Pull the knife or other tool out while matching up the edges of the damage.
5. Wipe off excessive adhesive.
6. Sand off any smeared adhesive with the included 80 grit sandpaper.
7. Sand around the damaged area to smooth the surface with the included 80 grit sandpaper. You may need to sand off tire lettering. The objective is to have a smooth, clean and dry surface for 100% rubber to rubber contact.

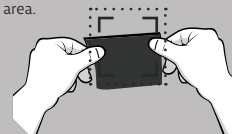


8. Use scissors or knife to cut the provided patch to fit your application if needed. Be sure to have a minimum 3/4" border around the damage. More border is better when possible. If you have the proper equipment, avoid catching the edge on debris when in use by sanding or cutting the edges of the applied patch at a 45-degree angle. While not required, this helps increase the longevity of the patch.

9. Place the patch on the tire and trace the perimeter of the patch using a marker.
10. Remove the patch and confirm it covers the damage as desired.



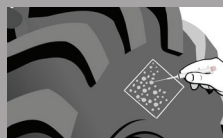
11. Practice placing the patch over the damage with desired alignment so the patch will cover the marked area.



PATCH PLACEMENT

Small patches (less than 1.5' x 3")
APPLY ADHESIVE TO THE TIRE

- 12-A. Add adhesive to the tire with the applicator tip in drops surrounding the slice or puncture (approximately 25 small drops per square inch).
- 13-A. Place the patch on the tire along the marked lines.
- 14-A. Hold the patch in place for 30 seconds.
- 15-A. Allow the adhesive to cure for 1 hour before inflating the tire (Or use Accelerator as shown below)
- 16-A. Inflate the tire slowly and inspect for leaks



Large patches (larger than 1.5' x 3")
APPLY ADHESIVE TO THE PATCH

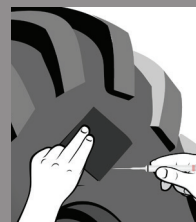
- 12-B. Now you are ready to add adhesive to the bottom of the patch. Place the patch as practiced above with a few drops of adhesive. On the bottom of the patch, do not slide the patch into position. The adhesive on the surface will become slippery. Once the patch and adhesive make contact, hold it in place for 30 seconds. Remember you can always start over by sanding.
- 13-B. Add another row of adhesive to the patch in the rolled back position near the bond line. Press the patch firmly for 30 seconds before applying the next row of adhesive.
- 14-B. Repeat the process by adding drops of adhesive along the bond line. **More adhesive is not better.** Too much adhesive will make a weak brittle bond. Spaces between small drops will allow adhesive to make the chemical weld.



- 15-B. Allow the adhesive to cure 1 hour before inflating tire (or use accelerator as shown below).

- 16-B. Inflate the tire slowly and inspect for leaks.

- 17-B. If a leak is found, remove the compressed air from the tire. Leaks can be fixed by pulling up the area surrounding the leak with pliers and adding a small drop of adhesive with the applicator tip. Then hold the newly applied portion firmly for 30 seconds.



- 18-B. Wait 30min before carefully inflating again.

- 19-B. Make sure to keep applicator tip on the bottle to act as the cap after use.

CURE PATCH IMMEDIATELY

1. Spray edges of patch with Accelerator.
2. Allow 15 seconds to dry.
3. Inflate tire.



INFLATE TIRE

1. Screw the CO2 Inflator onto the tire's valve
2. Slide the Insulator over the CO2 Canister
3. Screw the CO2 Canister onto the CO2 Inflator and release air
4. Repeat process until desired PSI is Achieved





GLUETREAD LLC 11684 Hayden St
www.GlueTread.com Hiram, OH 44234
Assembled in the USA 800-238-9791

TROUBLESHOOTING

PROBLEM: Adhesive leaks out when starting to inflate.

SOLUTION: Humidity is low and/or too much adhesive applied. Deflate the tire. Hold down on the patch above the leak for 30 seconds. Wait additional 30 minutes (or use accelerator and inflate immediately).

PROBLEM: Chemical sealant is in the tire.

SOLUTION: Rotate the puncture or slice to the 12 o'clock position. Dry the area. Perform the patch procedure. Allow extra time to dry if possible. The chemical sealant can help the patching process, but it must be fully cured prior to inflation. Rotate tire so gravity can flow the sealant to the repaired area.

PROBLEM: Can I start over?

SOLUTION: Yes, remove the patch immediately and sand the tire around the defect. Remove all the dried shiny adhesive and rubber patch that bonded. Repeat the process.

PROBLEM: Patch cracked off

SOLUTION: Too much adhesive was applied. Start over after sanding off adhesive and rubber. This time use small drops of adhesive applied with space in between.

WARNINGS

PRODUCT WARNINGS

- Not intended for on-road use
- Not intended for highway use
- Choking hazard
- Do not use to patch tires of vehicles carrying heavy weight
- Changes in environment may cause the tire to lose pressure and the load may shift resulting in serious injury or death
- Wear protective eye wear during use
- Do not inflate over 35 psi
- Intended as a temporary patch, seek professional attention as soon as possible
- After the patch is applied, do not operate vehicle in a situation where tire failure could result in injury
- Consult tire manufacturer before use to see if your tire is fit for the External Patch Kit

ADHESIVE WARNINGS-

Avoid breath vapors. Wash hands thoroughly after handling. Use outdoors or in a well-ventilated area. Keep away from flames and hot surfaces. No smoking. In case of fire: use dry chemical or carbon dioxide (CO2) to extinguish. Wear protective gloves and eye/face protection. Contaminated work clothing must not be allowed out of the workplace. Wash contaminated clothing before reuse. If on the skin, wash with plenty of water. If skin irritation or rash occurs: get medical advice/attention. If in eyes, rinse cautiously with water for several minutes. Remove contact lenses if present and easy to do. Continue rinsing. If eye irritation persists: get medical advice/attention. If inhaled: remove person to fresh air and keep comfortable for

breathing. Contact a poison control center if not feeling well. Store in cool, well-ventilated place and keep the container tightly closed. Store locked up. Dispose of contents/container in accordance with all applicable regulations

ACCELERATOR WARNING:

WARNING: COMBUSTIBLE LIQUID,- Contains Synthetic Hydrocarbons and Aromatic Amine. Use with adequate ventilation. Avoid prolonged breathing of vapors. Do not induce vomiting if ingested. In case of eye or skin contact, flush with water. KEEP OUT OF REACH OF CHILDREN. This product may contain chemicals to the state of California to cause cancer.

For more information, visit www.P65Warnings.ca.gov

INFLATION KIT WARNING:

- CAUTION:
- Contents under pressure
 - Do not heat above 120 F (49 C)
 - Do not Puncture Cartridge
 - Do not inhale or discharge towards face and body
 - Keep out of reach of children
 - Use Insulator on CO2 canister to avoid cold burns