



951-658-7077 | 5356 E. Pine Ave Fresno, CA 93711



## AP-309180

(Installation Instructions for 10+ 4Runner Roof Rack, Kits AP-308669, AP-309338, AP-309339, and AP-309178)

	<b>NOTICE</b> Read instructions completely before installing this product. Refer back to the instructions frequently during installation.		<b>CAUTION</b> Flying Object Hazard. Fluid Splash Hazard. Wear safety glasses at all times when working on vehicle.
<b>WARNING:</b> Cancer and Reproductive Harm - <a href="http://www.P65Warnings.ca.gov">www.P65Warnings.ca.gov</a>			



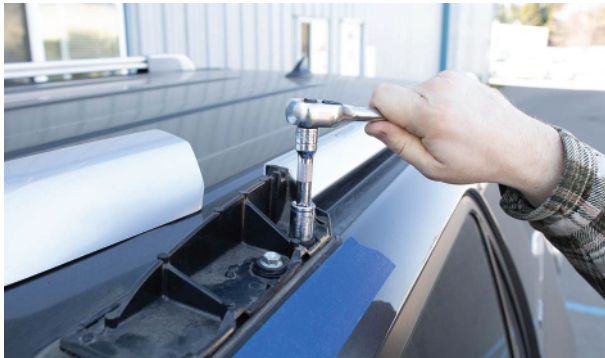
1. Remove the (4) plastic covers on the front and rear ends of the factory roof rack by prying them off the rails as shown. It is a good idea to put a layer of masking tape on the body right below the roof rack to protect the paint when you are removing the covers.



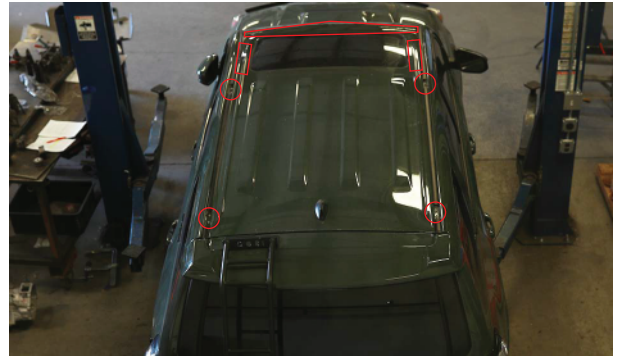
## AP-309180-INS



**2.** Remove the (8) bolts holding the factory roof rack to the roof. Keep these bolts and sealing washers as they will be used to mount the new rack to the roof.

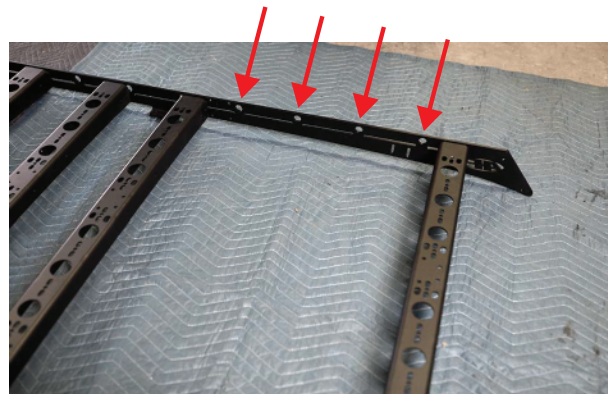


**3.** Clean the area around the factory mounting locations to remove any dirt or debris. Clean the locations shown on the roof using a microfiber cloth and soapy water if needed. Make sure the areas are dry after the cleaning is complete.



**4.** If you purchased your roof rack without any coating, we recommend painting or powder coating your new roof rack parts to minimize corrosion.

**5.** Lay down a moving blanket or cardboard to make sure the powder coated roof rack parts will not be scratched as they are assembled. Assemble the crossbars to the side rails using the provided 1/4" bolts, lock washers, and flat washers as shown. We recommend initially spacing the provided crossbars in every other mounting slot to space them evenly across the length of the rack. If your 4Runner has a sunroof, we recommend keeping the locations shown free of crossbars to minimize any wind noise that may occur over the sunroof.





951-658-7077 | 5356 E. Pine Ave Fresno, CA 93711



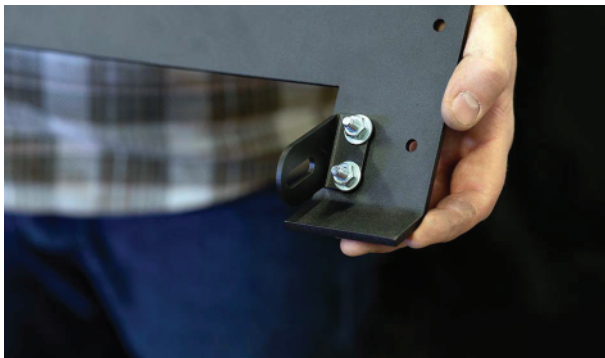
**6.** Using the provided 1/4" bolts, flat washers, and lock nuts, assemble the front mounting feet to the slots in the side rails. Initially position the mounting feet at the top of the mounting slots.



**7.** Assemble the front deflector mounting brackets to the side rails using the provided 1/4" bolts, flat washers, and lock nuts.



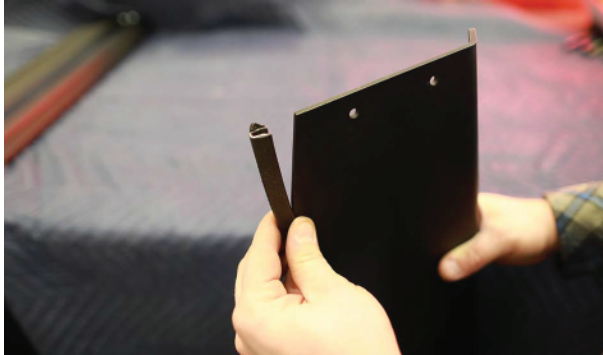
**8.** If you plan on mounting a light bar to your front deflector, mount the light bar brackets to the front deflector with the provided hardware as shown. Mount the desired light bar between the mounting brackets.







**9.** Apply the provided trim to the bottom edge of the front deflector as shown. Mount the front deflector to the front mounting brackets using the provided hardware. Initially position the deflector so the top bend is even with the top of the side rails as shown. Hand tighten the deflector mounting bolts so the deflector can be easily adjusted later.



**10.** Apply the provided paint protection film to the roof just above the windshield as shown. Work slowly to ensure the film is applied evenly and there are no air bubbles trapped under the film. Save the excess film as it will be used later.



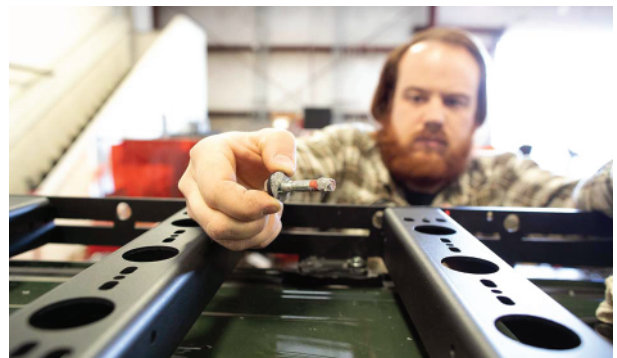
**11.** Apply a generous amount of sealant around the factory mounting locations as shown using the supplied sealant. Align the holes in the supplied mounting blocks with the plastic sleeves coming up from the roof and set the mounting blocks on top of the roof. Apply light pressure to seat the mounting blocks against the roof. Apply a light, even coating of sealant to the tops of the mounting blocks.



**12.** With another person's help, set the roof rack on top of the mounting blocks lining up the holes in the roof rack side rails with the holes in the mounting blocks. If you need to readjust the rack's position after setting it on top of the mounting blocks be sure to reapply the sealant between the mounting block and the side rail.



**13.** Using the original mounting hardware, bolt the roof rack to the roof of the vehicle. Apply a small amount of sealant on the threads of the bolts and under the sealing washer to ensure the joints are leak proof. Note the original mounting hardware should be Toyota part number 6323042010 or a Toyota equivalent. If you do not have the bolt from Toyota you will need to purchase them separately or use a comparable M8-1.25x45mm bolt and sealing washer.



**14.** Apply the remaining paint protection tape under the front mounting brackets where they will contact the roof.



**15.** Slightly loosen the bolts used to attach the front mounting brackets to the side rails so the brackets can slide up and down. Remove the adhesive strip backing on the bottom of the mounting brackets and firmly push the bracket against the roof. Gently lift up on the rack and tighten the bolts used to secure the front mounting brackets. Lifting up on the rack will ensure that there is constant pressure forcing the mounting bracket against the roof of the vehicle.

**16.** Loosen the front deflector bolts and slide the deflector so it lightly touches the front of the roof. A small amount of clearance between the deflector and the roof is also acceptable. Tighten the deflector mounting bolts.



**17.** Adjust the crossbars as desired and double check to make sure all bolts are tight.