

INSTALLATION INSTRUCTIONS



TACOMA 3" FRONT LIFT STRUT EXTENDER STYLE

303065-1-KIT (2005-2014 TACOMA PRERUNNER/4WD)

KIT CONTENTS





RECOMMENDED TOOLS

Ratchet & Socket Set

Torque Wrench

Adjustable Wrench

Combination Wrench Set

Jack Stands

Floor Jack

CAUTION

1. Read all instructions completely and carefully before you begin. If anything is not clear, please call our tech support line at 1.877.4X4.TOYS or 559.252.4950 before proceeding.
2. Check to make sure the kit is complete and that no parts are missing (refer to the Kit Contents Section on the first page of these instructions). If anything is missing, please contact Trail-Gear at 1.877.4X4.TOYS or 559.252.4950.
3. Park vehicle on a clean, dry, flat, level surface and block the tires so the vehicle cannot roll in either direction.
4. This kit is for off-road use only. It is recommended that the installation steps below be performed by a competent mechanic. Installation of this kit may change the handling characteristics of your vehicle. Buyers and users of this product hereby expressly assume all risks associated with the installation and use of this kit.
5. This installation is typical for most 2005+ Toyota Tacoma trucks. Some years or models may vary. If necessary, refer to the proper Factory Service Manual for the year and model of your Tacoma.

INSTALLATION INSTRUCTIONS



TACOMA 3" FRONT LIFT

STEP 1

Apply threadlocking compound (included with this kit) to the threads in the Strut Extender and to the threads on the short side of the stud. Install the stud into the Strut Extender using a stud installation tool or the double-nut method. Repeat for the remainder of the studs and the other Strut Extender.

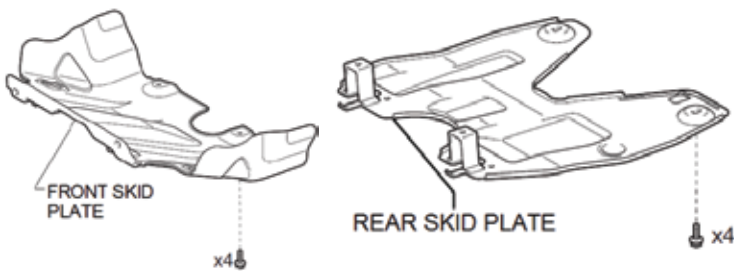


STEP 2

Park the vehicle on a hard, level surface. Place the vehicle securely on jack stands. Remove both front wheels.

STEP 3

Using a 12mm socket, remove the (4) M8 bolts holding the Front Skid Plate to the Vehicle. Using the same 12mm socket, remove the (4) M8 bolts holding the Rear Skid Plate to the Vehicle. Save both Skid Plates and all of the stock M8 bolts for reinstallation.



STEP 4

Using a 17mm socket, remove the nut from the top of the sway bar link, and remove the sway bar link from the steering knuckle. Save the nuts for reinstallation. Repeat for the other side of the vehicle.



STEP 5

Unplug the ABS speed sensor electrical connector from the ABS speed sensor. Repeat for the other side of the vehicle.



INSTALLATION INSTRUCTIONS



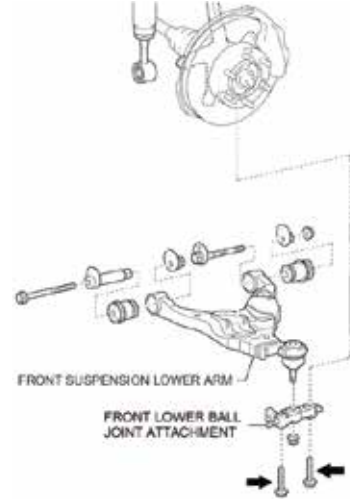
STEP 6

Using a 14mm socket, remove the bolts & support bracket from both sides of the front sway bar. Remove the sway bar from the vehicle. Save the bolts, support brackets, and sway bar for reinstallation.



STEP 7

Using a 19mm socket, remove the (2) screws holding the lower ball joint attachment to the spindle. Save the bolts for reinstallation. Repeat for the other side of the vehicle.



STEP 8

Using a 19mm socket, remove the bolt and nut holding the shock to the lower shock mount. Repeat for the other side of the vehicle. Save the bolts and nuts for reinstallation. Make sure to support the hubs with a jack stand to prevent excess travel of the CV Joints.



STEP 9

Using a 14mm socket, remove the (3) nuts holding the shock tower to the shock tower mount. Save the nuts for reinstallation. Repeat for the opposite side of the vehicle.



STEP 10

Remove the shock/coil spring assembly from the vehicle. Mark the bottom of the shock in relation to the top of the shock/coil spring assembly. The shock eyelet should be rotated 90° in relation to the stud on top of the strut that is nearest to the engine. Repeat for the opposite side of the vehicle.



INSTALLATION INSTRUCTIONS



STEP 11

Install the Strut Extender onto the shock/coil spring assembly. Secure the Strut Extender to the strut using the (3) stock nuts. Repeat on the other shock/coil spring assembly.



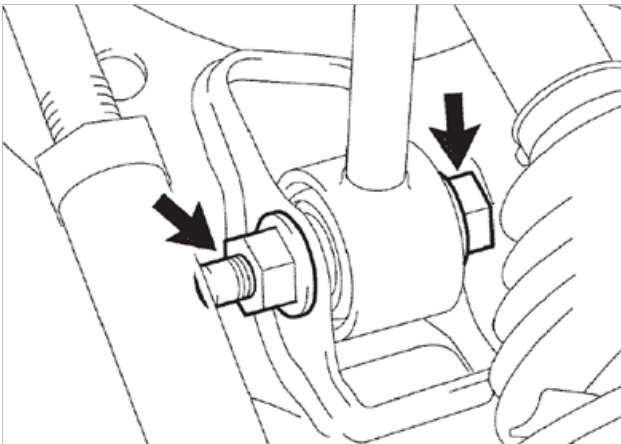
STEP 12

Install the shock/coil spring assembly back into the top mount, and secure the shock/coil spring assembly to the mount using (3) of the M10 flange nuts provided. Make sure to orient the shock/coil spring assembly 180° opposite to the position it was installed in previously. Torque the nuts to 47 ft-lbs or to the torque specified in the Toyota Tacoma factory service manual. Repeat for the other side of the vehicle.



STEP 13

Secure the shock eyelet to the lower shock mount using the bolt & nut removed in Step 8. Torque the nut to 61 ft-lbs or to the torque specified in the Toyota Tacoma factory service manual. Repeat for the other side of the vehicle.

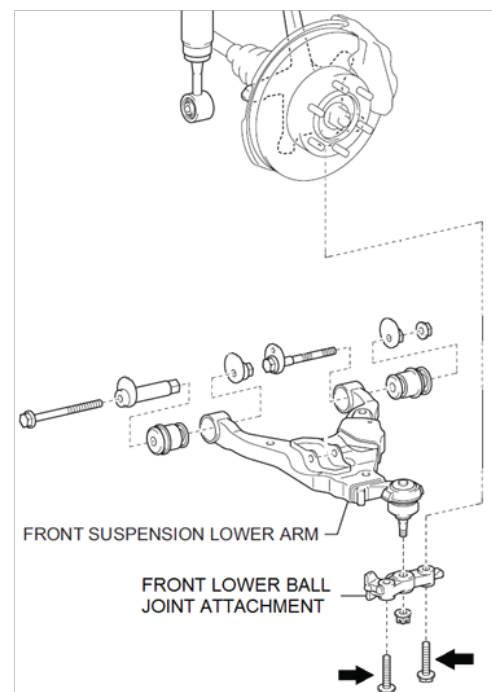


STEP 14

If needed, use a floor jack to raise the A-Arm. Use care to avoid excess strain or travel of the CV joints.

STEP 15

Reinstall the lower ball joint attachment to the spindle using the screws removed in Step 7. Torque the bolts to 118 ft-lbs or to the torque specified in the Toyota Tacoma factory service manual. Repeat for the other side of the vehicle.

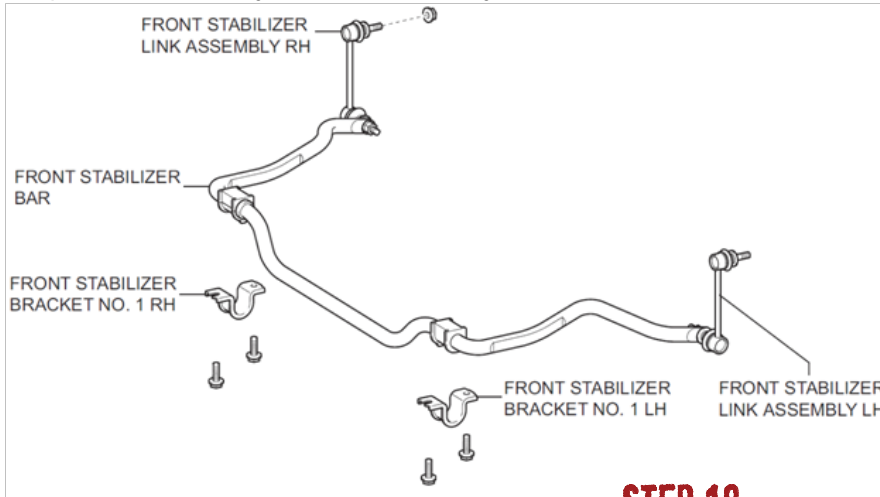


INSTALLATION INSTRUCTIONS



STEP 16

Reinstall the sway bar support/stabilizer brackets using the clamps and bolts removed in Step 6. Torque the bolt to 30 ft-lbs or to the torque specified in the Toyota Tacoma factory service manual.



STEP 17

Reinstall the ABS speed sensor electrical connector to the ABS speed sensor. Repeat for the other side of the vehicle.



STEP 18

Reinstall the sway bar link onto the steering knuckle and secure using the nut removed in Step 4. Torque the nut to 52 ft-lbs or to the torque specified in the Toyota Tacoma factory service manual. Repeat for the other side of the vehicle.



STEP 19

Reinstall the skid plates using the hardware removed in step 3. Tighten all (8) bolts to 22 ft-lbs of torque or to the torque value specified in the Toyota Tacoma Factory Service Manual.

INSTALLATION INSTRUCTIONS



STEP 20

If you are installing this lift on a 4WD Tacoma, the installation of a differential drop kit is highly recommended. If you have purchased a differential drop kit, install it at this time according to the manufacturer's instructions, otherwise proceed to step 21.

STEP 21

Lower the vehicle and make sure that both the front and rear suspension cycles. Take the vehicle for a short test drive. After the test drive, check the torque on all the hardware and tighten as necessary. Periodically recheck the torque on all of the hardware and tighten as necessary.

STEP 22



A front-end alignment should be performed immediately after installation of this kit. Failure to properly align the front end will lead to premature and uneven wear on the tires, damage front suspension components, and may cause an unsafe driving condition.

SERVICE PARTS

