

TACOMA REAR LIFT KIT

110230-1-K

KIT CONTENTS





RECOMMENDED TOOLS

| | | Sockets | Wrenches |
|--------------------|------------------------------------|----------------|-----------------|
| Loctite | Level | 8mm | 8mm |
| Cutoff Wheel | Straight Edge | 10mm | 10mm |
| Welder | Punch | 12mm | 12mm |
| Grinder | C-Clamps (2) | 13mm | 13mm |
| Plasma Cutter | Gasket Scraper | 14mm | 14mm |
| Paint Pen | Drill | 17mm | 17mm |
| Tape Measure | 5/16" Drill Bit (2.4 Engines Only) | 18mm | 18mm |
| Jack Stands | Allen Set | 19mm | 19mm |
| Floor Jack | | 21mm | 21mm |
| 3/8" Ratchet | | | |
| 1/2" Drive Ratchet | | | |
| Hammer | | | |

CAUTION

1. Read all instructions completely and carefully before you begin.
2. Check to make sure the kit is complete and that no parts are missing (refer to the Kit Contents List on the first page of these instructions). If anything is missing, please contact Trail-Gear at 559.252.4950.
3. Park vehicle on a clean, dry, flat, level surface and block the tires so the vehicle can not roll in either direction.

INSTALLATION INSTRUCTIONS



STEP 1

Remove spare tire. Spare tire mount will need to be relocated.



STEP 2

Trim exhaust just behind axle housing.



STEP 3

Remove brake pressure linkage.



STEP 4

Disconnect e-locker and ABS connectors if present.



STEP 5

Remove brake line and brake line clip.



STEP 6

Disconnect e-brake linkage.



INSTALLATION INSTRUCTIONS



STEP 6

Remove shocks.



STEP 7

Remove driveline.



STEP 8

Using a plasma cutter, cut the factory shock mounts off.



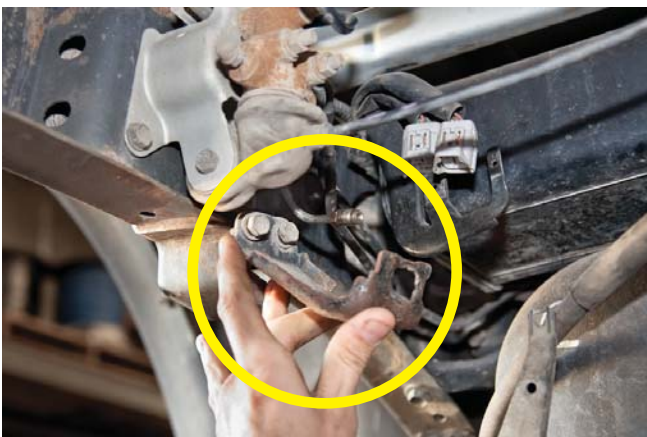
STEP 9

Factory mount is welded on the outside of the frame on the driver's side only.



STEP 10

Remove stock brake line bracket.



STEP 11

Move load sensing proportioning valve out of the way for future installation of frame boxing kit.



INSTALLATION INSTRUCTIONS



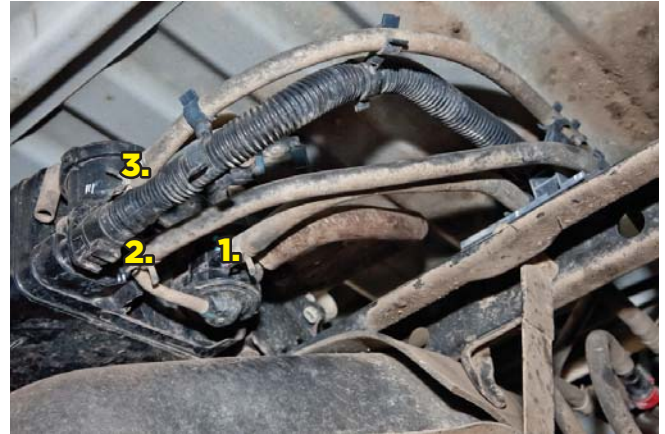
STEP 12

Remove e-locker vent from frame.



STEP 13

Mark the 3 purge lines to ensure proper reinstallation.



STEP 14

Remove purge canister from vehicle.



STEP 15

Mark centerline of axle housing for future reference.



STEP 16

Remove axle housing by removing u-bolts and then leaf spring bolts.



STEP 17

Mark center of stock front leaf spring bolt.



INSTALLATION INSTRUCTIONS



STEP 18

Mark center of stock rear shackle bolt.



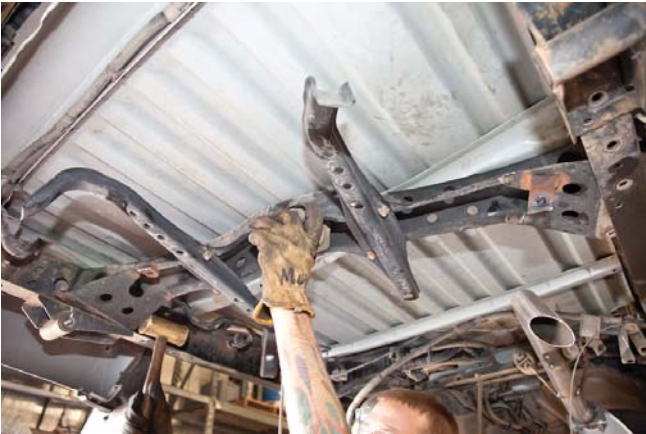
STEP 19

Remove front spring brackets from frame. Note: On driver's side, bracket is close to the gas tank. We recommend removing the gas tank before cutting and welding.



STEP 20

Remove the spare tire crossmember. **Be sure to leave bumper bolted up to keep frame from spreading.**



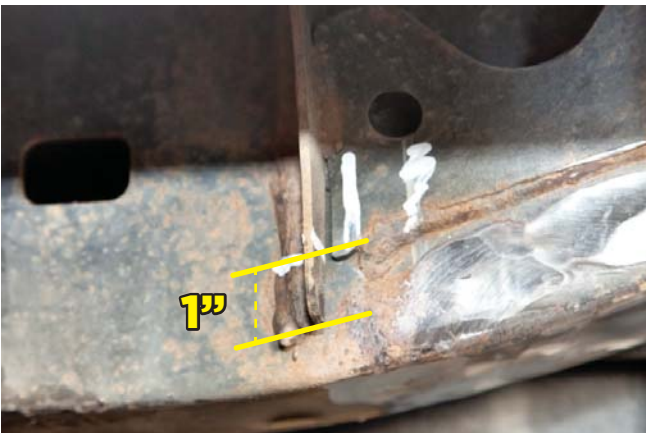
STEP 21

Remove shackle mounts and grind frame smooth.



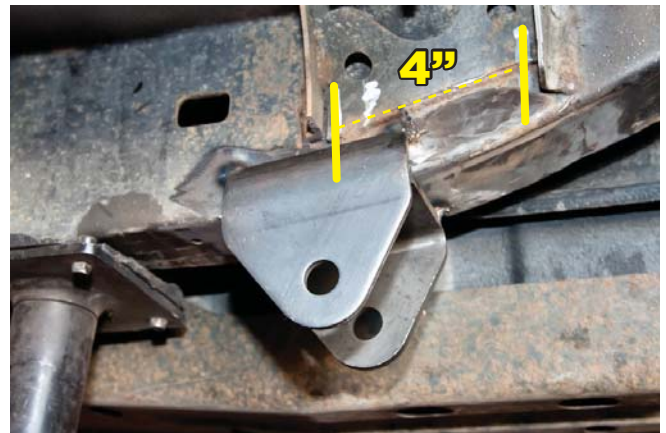
STEP 22

On the front most part of the body mount, above where previous mount was removed, measure up 1" and remove to make room for new bracket.



STEP 23

Measure 4" forward from original mark and tack new mount into place.



INSTALLATION INSTRUCTIONS



STEP 24

Make sure mount is square before tacking into place.



STEP 25

Install spring into front mount.



STEP 26

Assemble shackle, leaf spring, and mount.



STEP 27

Tack shackle mount to frame 2.5" forward of previous mount (bolt center to bolt center).



STEP 28

Remove all electrical components from housing.



STEP 29

Remove brake lines from housing.



INSTALLATION INSTRUCTIONS



STEP 30

Remove factory perches from housing and grind clean.



STEP 31

Remove brackets from housing.



STEP 31 CONTINUED



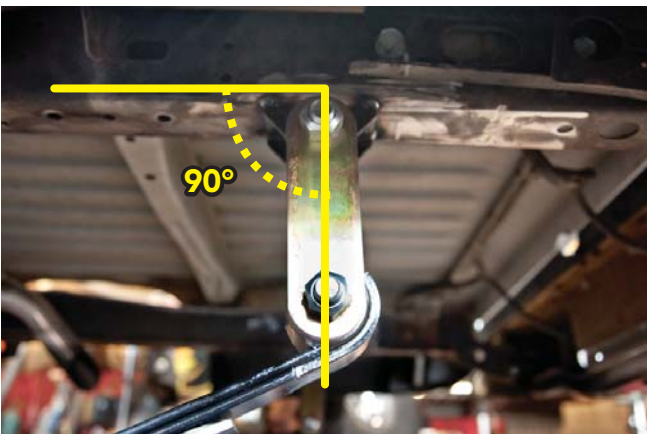
STEP 32

Install new perches without welding, u-bolts, and plates to leaf spring and housing and tighten to a snug fit. Center pin to center pin should be 39 1/2".



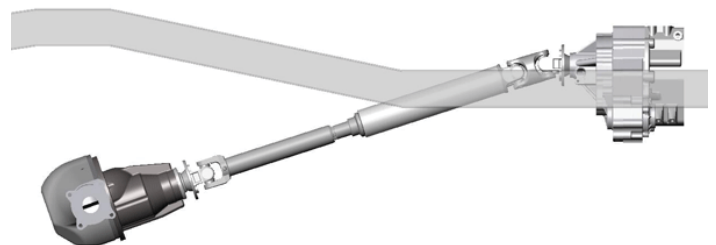
STEP 33

Place rear axle on jack stands with weight of vehicle on suspension. Ensure shackles are at a 90° angle. If so continue to step 34.



STEP 34

Rotate housing to achieve desired pinion angle. Once desired pinion angle is achieved, tack perches to housing. Remove u-bolts and weld perches into place.

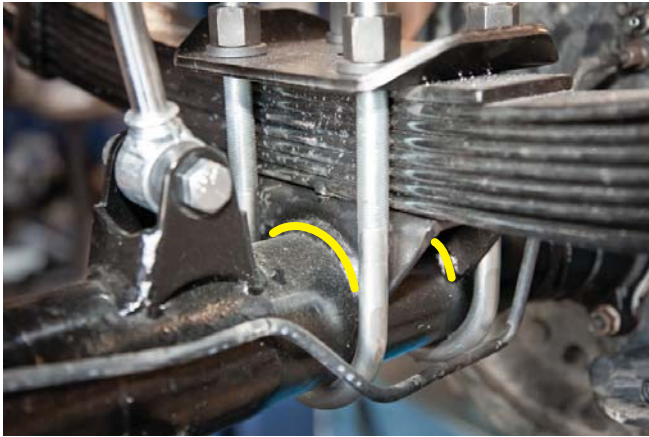


INSTALLATION INSTRUCTIONS



STEP 34 CONTINUED

Perches welded.



STEP 35

Using wire wheel, clean frame to allow frame boxing kit to be welded.



STEP 36

Place frame boxing plate in frame rail and clamp into place. Due to frame variations, you may need to clamp frame to ensure a proper fit.



STEP 37

Tack plate to frame and remove clamps.



STEP 38

Tack rear support tube onto frame plates as desired. We recommend placing it as far back to the rear of the plate as possible.



STEP 39

Weld plates to frame and weld the support tube to the plates.

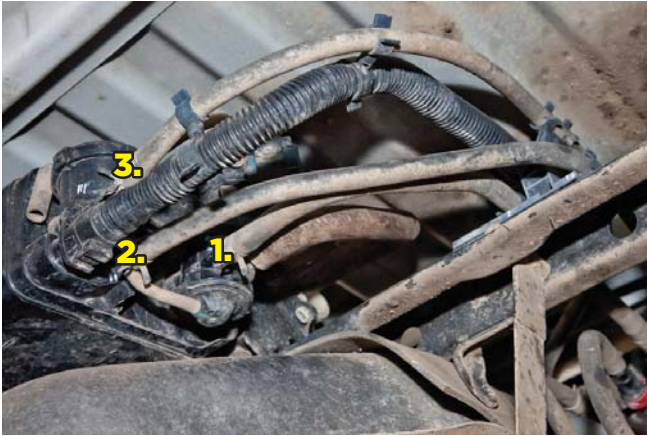


INSTALLATION INSTRUCTIONS



STEP 40

Re-install purge canister, ensuring that the 3 lines are connected in their original locations.



STEP 41

Measure approximately 3 1/2" from leaf pack and tack shock mount as shown. Do same for both sides.



STEP 42

Place vehicle on jack stands to compress the suspension. Position shock tube above axle on frame plates and approximately 1" behind axle centerline and tack into place.



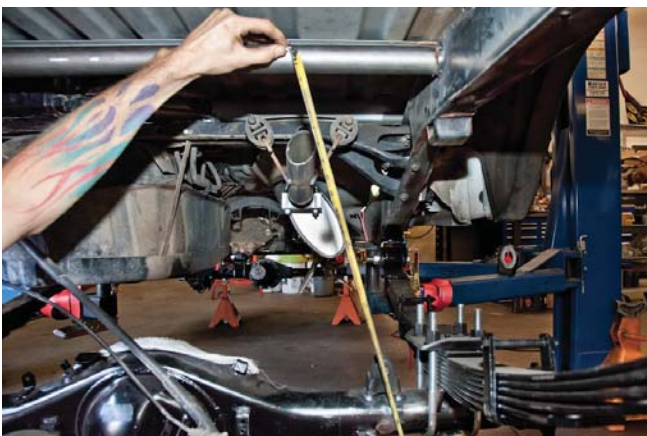
STEP 43

Measure shock length eye to eye with desired amount of shock shaft showing. We recommend 50/50.



STEP 44

Measure from lower shock mount to upper tube and mark where shock bolt will be as shown in the following 2 images.



STEP 44 CONTINUED



INSTALLATION INSTRUCTIONS



STEP 45

Drill previously marked spot out with 3/4" drill bit or hole saw.



STEP 46

Place sleeve into tube and weld into place. At this time you can also weld the shock tube into place.



STEP 47

Place load sensing proportioning valve on frame and mark holes.



STEP 48

Either tack bolts to the frame as shown or drill and tap plate to mount the valve to the frame.



STEP 49

Mount valve and install brake lines.



STEP 50

You may need to straighten your brake lines to reach the valve.



INSTALLATION INSTRUCTIONS



STEP 51

Install supplied freeze plug in housing using ultra grey if need to block off ABS hole.



STEP 52

Install shocks.



STEP 53

Install supplied rear brake line.



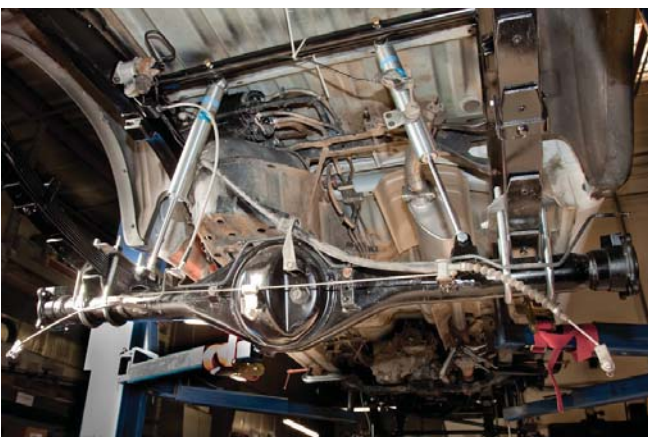
STEP 54

Remove bracket from e-brake cable.



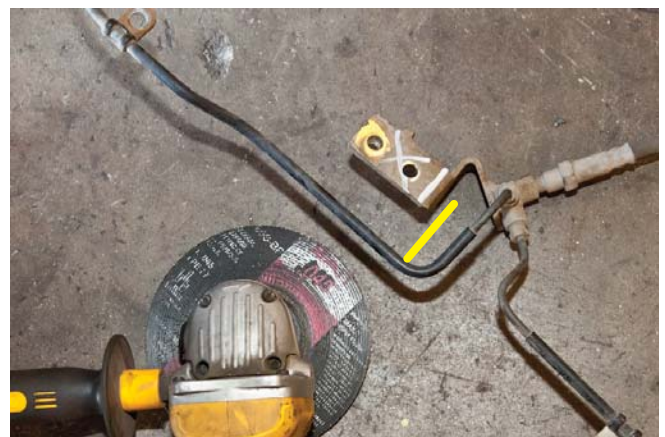
STEP 55

Install e-brake cable to housing.



STEP 56

Trim stock brake line bracket.



INSTALLATION INSTRUCTIONS



STEP 57

Weld brake line bracket to housing.



STEP 58

Re-install brake lines.



STEP 59

Re-install parking brake.



STEP 60

Remove e-locker harness from loom with ABS wires and tape together.



STEP 61

Re-install e-locker harness in truck.



STEP 62

The load sensing proportioning valve line will need to be reattached. This can be done by fabricating a bracket, or sometimes by stretching out the assembly.



INSTALLATION INSTRUCTIONS



STEP 63

Below is an example of how your load sensing proportioning valve line should look. Adjust the mounting location at the housing. At ride height, the valve should be in the center of its throw.



STEP 64

Install driveline. Driveline may need to be lengthened.



STEP 65

Bleed brakes.

STEP 66

Torque all hardware.

STEP 67

Grease suspension at greasable bolts.

STEP 68

Install tires and test drive.

STEP 69

Re-torque u-bolts.