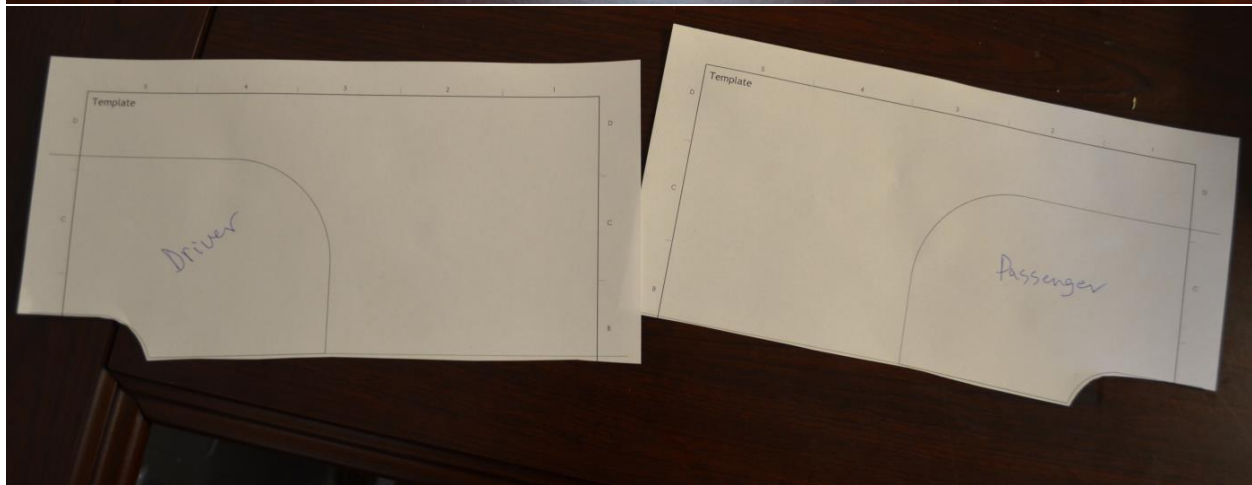
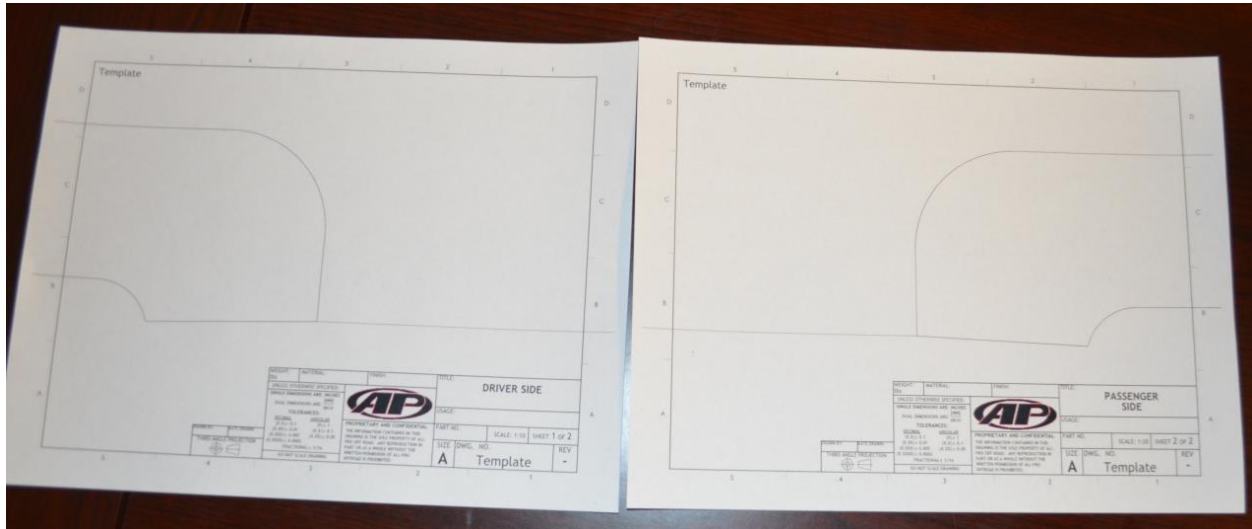


HOW TO USE BAJA 2.0 BUMPER CUT TEMPLATE:

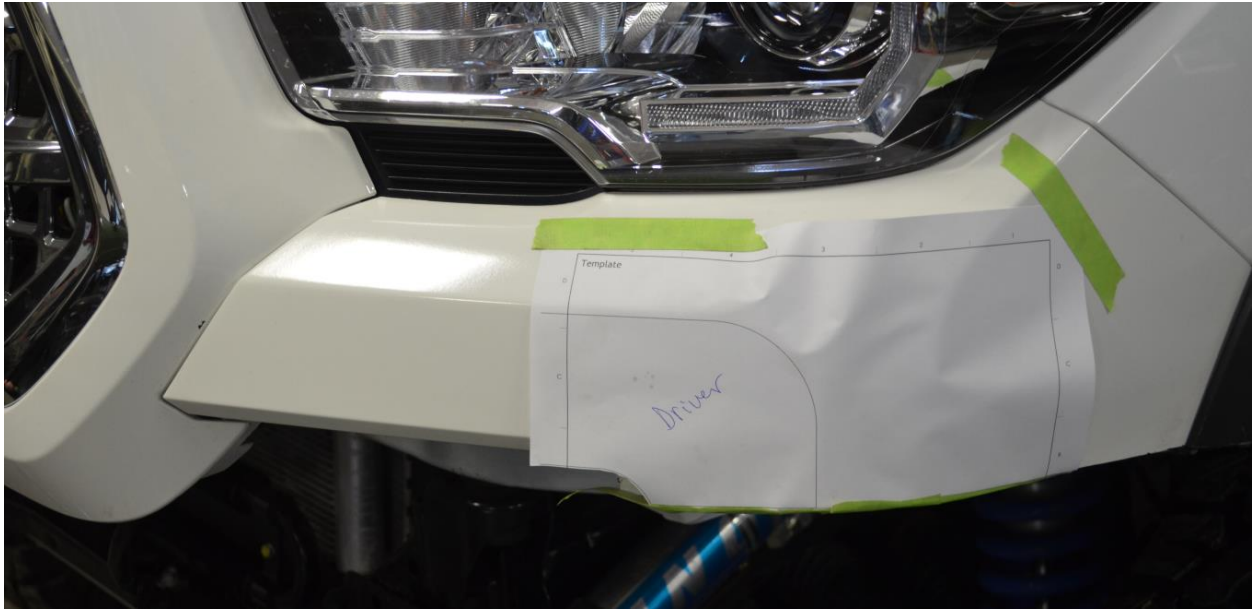
Take provided 1:1 scale cutting template and cut bottom half of template off saving the line. Make sure to note which side is for passenger and which side is for driver.



After template has been cut out, locate the raised edge on the bumper around the stock fog lights. This edge is the reference to use to position the template.



Using painters tape, tape the template to the bumper being careful to match the lines on the template with the lines on the bumper.



Cut following the bottom line through the flare.